

## WELCOME TO CALC2!

**CALC2** is a calculator that lets you take advantage of the easy-to-use Macintosh interface. Menus and buttons allow simultaneous access to as many as four different mathematical functions. A scrolling, resizable “paper tape” window lets you see all your calculations. You can print and save your work. You can copy and paste your calculations into your word processor or any other application that accepts text files. **CALC2** is easy to use, but has lots of features. Print out this manual if you want to.

### OVERVIEW

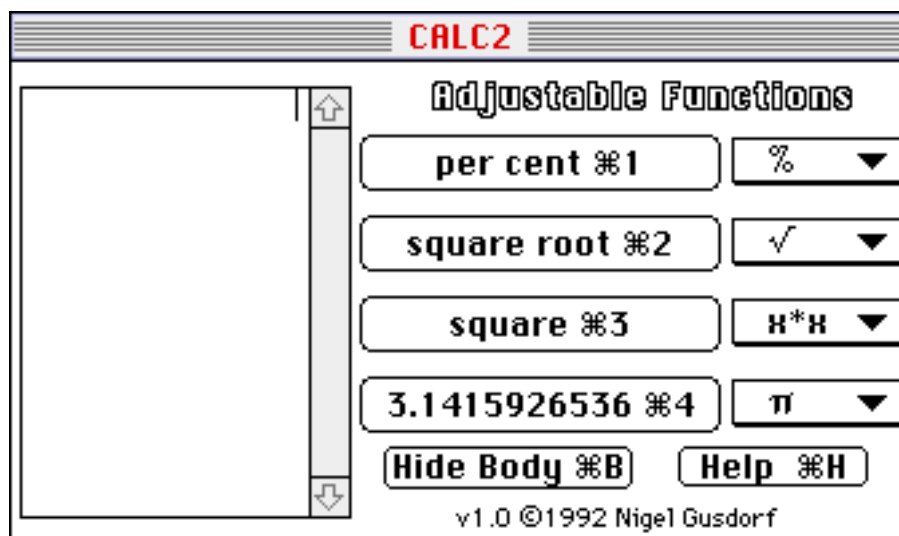



figure 1

When you launch CALC2, what you’ll see is illustrated in figure 1, above. The scrolling “**tape window**” is on the left. In the center are the four **function buttons** and on the right are the four **pop-up menus**. The **Hide Body** and **Help buttons** are near the bottom. You will also see the familiar , File and Edit menus on the menu bar at the top of your screen.

#### The POP-UP MENUS

The four pop-up menus all list the same eleven built-in mathematical functions. In figure 2, below, we dropped a pop-up menu to show the math functions. “x\*x” stands for “squared.” “K” means constant (you can select your own constants). “e^x” means “e raised to the power of x.” “rand” is the random number generator.

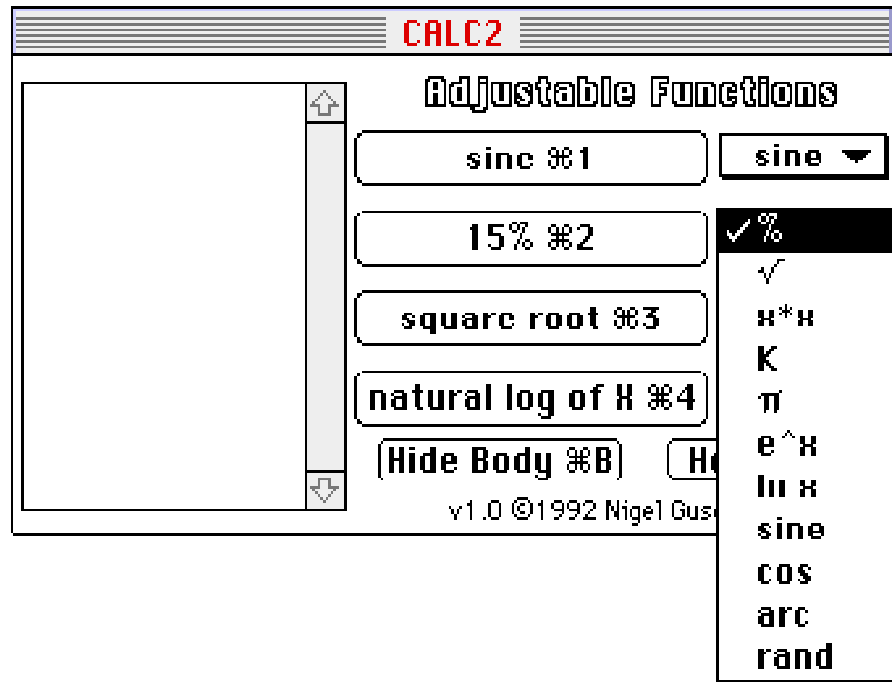


figure 2

### **THE FUNCTION BUTTONS**

The pop-up menus control what appears in the function buttons. In figure 2, above, sine is selected in the top pop-up menu and the word “sine” appears in the top function button. Just below, the % function is chosen in the displayed menu and “15%” appears in the function button (it’s easy to specify which percentage — more later).

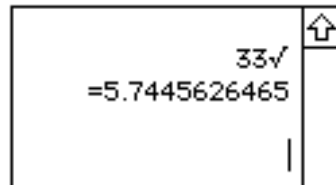
Each function button is assigned a permanent command key. The top button is always ⌘-1. The second button is always ⌘-2, the third button ⌘-3 and the bottom button is always ⌘-4.

### **USING FUNCTIONS**

To enter a function, click its function button or type its ⌘-key shortcut. Then press the equal key (=) to display the answer.

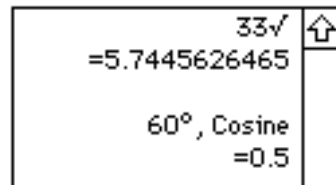
Let’s say you want the square root of 33. In figure 2, square root already appears in the third function button. Just type “33”. Then click your mouse in the third function button (or press ⌘-3). Now press the equal key. (The Return and Enter keys also serve as equal keys.) What you’d see in the tape window is shown in figure 3, below. CALC2 figured the answer to 10 decimal places.

3



**figure 3**

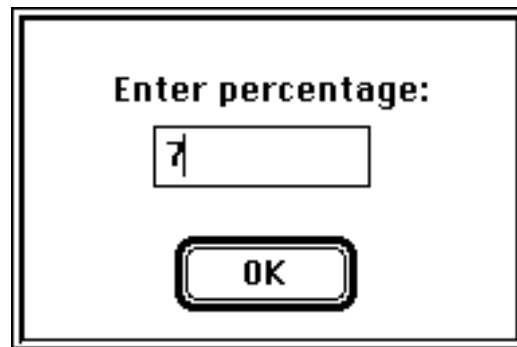
Now you want the cosine of 60 degrees. First you type "60", which appears in the tape window. Cosine isn't in any function button, so you select "cos" from any of the pop-up menus. A function button now says "cosine". Click that button, then press '='. Figure 4, below, shows the result.



**figure 4**

Note that your previous calculation of the square root of 33 is still visible.

Now for a percentage calculation. You want to subtract 7% from 105. But the second function button has 15% entered! Or, if you just launched CALC2, the top function button simply says "per cent." Doesn't matter. Just click "%" on the pop-up menu and a dialog box opens. See figure 5, below. Enter "7" in the dialog box and click "OK" (or press the Return key). "7%" now appears in the function button. You could have selected "%" from any of the other pop-up menus. The same dialog box would open.



**figure 5**

By the way, don't type "%" in the dialog box. It's not necessary and CALC2 will just beep at you.

To subtract 7% from 105, type "105", then minus (-), then click the "7%" function button (or press its ⌘-key equivalent), then press "=". The results appear in figure 6, below.

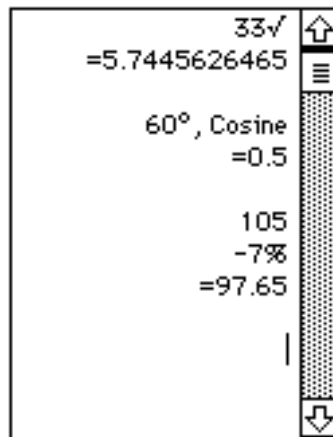


figure 6

As you can see in figure 6, the "tape" window's scroll bars become active after you've entered enough lines.

You've also seen that to use the % function, you must enter an operand between the number and the percent. If you type 105 and click the percent button, you'll hear a beep because CALC2 needs to know if you want to add, subtract, multiply or divide by 7%.

Selecting K on a pop-up menu opens another dialog box. Type your constant and close the dialog box. Your constant will appear in the corresponding function button. Figure 7, below, shows the constant dialog box and resulting function button and pop-up menu.

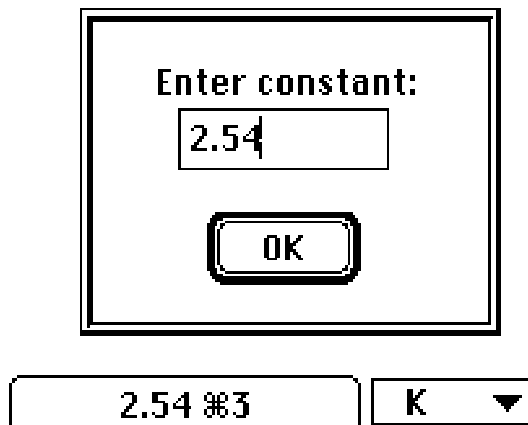


figure 7

In figure 7, we entered 2.54, the number of centimeters to the inch. If you want to figure out how many centimeters are in a foot, just type "12\*", click the function button and press the equal key. The answer of 30.48 appears in the tape window.

You can keep up to four different constants handy by selecting K from each pop-up menu and entering a different constant in each dialog box. You could also keep four percentages handy the same way.

The last function to use a dialog box is the random number generator, or rand on the pop-up menus. If you select rand, a dialog box allows you to select the range of random numbers that you want. See figure 8, below.



figure 8

Positive random numbers is the default selection. You can have all three selections available by selecting rand from three pop-up menus and selecting a different range from each dialog box.

#### **ABOUT THE EQUAL KEY (=)**

You may wonder why you have to press the equal (=) key after you enter a function. If you type 33 and click the square root button, shouldn't you get your answer immediately? That would be fine if you just want the square root of 33. CALC2 allows you to do more powerful calculations. If you want the square root of 33 multiplied by the cosine of 60 degrees, and to add 7% to that and divide the result by 2.54, you will need to press the equal key to let CALC2 know when you're done. See figure 9, below.

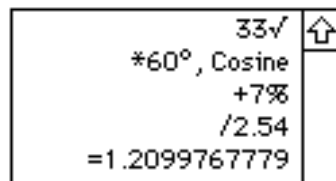


figure 9

If you are doing arithmetic, and not using any functions, most calculators, including CALC2, require you to press '=' when you're done. Consistency in requiring the equal key when you do use functions is easier to remember and allows complex calculations like the one in figure 9.

### **GETTING HELP ⌘-H**

To open CALC2's help window, click the Help button. The Help button can be seen in figure 1, above, just below the pop-up menus. You can also open the help window by choosing Help... from the File menu or by pressing ⌘-H.



**figure 10**

The Help window has a pop-up menu to let you quickly choose a help topic. Figure 10, above, shows a partial view of the help window, with the pop-up menu displayed. Select a topic from the pop-up menu. It will appear in the help window. Much of the information in this manual is available in the help window, plus additional illustrations.

To close the help window, click the OK button, press Return, click the close box or press ⌘-W.

### **HIDE BODY and SHOW BODY ⌘-B**

In figures 1 and 2, above, you can see the Hide Body button below the function buttons. Clicking the Hide Body button, entering ⌘-B from the keyboard, or selecting Hide Body from the File menu hides the body of the

calculator and leaves only the “paper tape” window visible on screen. The size of the tape window can be controlled by clicking in the zoom box or dragging the grow box. This feature lets you save space on your screen by only showing the tape window, or lets you see more of your calculations by enlarging the tape window. You can also use the grow box to make the window smaller, if you want.

On the File menu, Hide Body is replaced with Show Body. Selecting Show Body or entering ⌘-B will make the calculator reappear.

### **THE LIST OF COMMANDS WINDOW ⌘-K**

Selecting Command Keys from the File menu, or pressing ⌘-K, opens a window that lists all of CALC2’s ⌘-key equivalents. See figure 11, below.



**figure 11**

This window is not only a handy list of ⌘-keys. If you selected Hide Body, you must enter functions using the function buttons’ ⌘-key equivalents (⌘-1 through ⌘-4). The top of the List of Command Keys window displays the four currently selected functions. If you are using the Percent, Constant or Random functions, then the actual percentage, constant or range of random numbers you chose will appear in the list. If you are using  $\pi$ , then 3.1415926536 ( $\pi$  to 10 decimal places) appears in the list. If you change a function, the Command Key list immediately reflects that change.

To close the window, click the OK button, press Return, click the close box or press ⌘-W.

## **PHILOSOPHY BREAK**

Why does CALC2 bother with four pop-up menus plus four function buttons instead of giving each function its own button? Well, you've already seen how the menus and buttons allow you to have up to four constants, or four percentages handy at one time. It is also easier to hit four big buttons than eleven itty-bitty buttons. CALC2's design gives you the choice of using ⌘-key substitutes if you prefer the keyboard to clicking the mouse. The ⌘-key substitutes also make the Hide Body feature possible.

In other words, CALC2 was designed to be Macintosh software rather than an imitation of a hardware calculator.

Enough philosophy. Time for more features.

## **DUPLICATE TOTAL ⌘-D**

To re-enter the previous total, select Duplicate Total from the Edit menu or press ⌘-D. Your total will re-appear on a new line as the first entry in a new calculation. Duplicate Total is only available after the equal sign (or the equivalent Enter or Return key) has been pressed.

This command makes it easy for you to continue working with a total without having to re-type it, while preventing a total from inadvertently being included in the next calculation.

## **MONEY ⌘-M**

To confine CALC2's answers to two decimal places, select Money (⌘-M) from the Edit menu. A check mark ( ) will appear next to Money on the Edit menu. Now, no matter what figures you enter, the answer is rounded to two decimal places. We call this feature "Money" because most people use it for financial transactions.

To return to floating decimal answers, select Money (⌘-M) again. Money will no longer be checked.

## **CLEAR AND DELETE**

In case of an error in typing or in entering a function: To clear everything, press either the clear or escape key. To delete the last line, press the delete key. Here's what each key does:

**clear or escape key:** "•CLEARED•" will appear in the Tape Window. CALC2 will not consider anything previously entered.

**delete key** (backspace key on earlier Macs): Deletes the last **line**. Only the last line can be deleted. Use the clear or esc key to start over.



**MENU SUMMARY**

CALC2 has three menus: the familiar Apple (🍏), File and Edit menus.

**The Apple Menu**

The Apple menu contains the About CALC2... selection. Selecting About CALC2... opens a dialog box that reminds you that CALC2 is copyrighted and is shareware. If you keep it more than 15 days send \$20.00 to:

Nigel Gusdorf  
1505 Arcadia Avenue  
Austin, TX 78757

(You were wondering when I was going to bring this up.)

**The File Menu**

The File menu is illustrated in figure 12, below.

<b>File</b>	
<b>Help...</b>	<b>⌘H</b>
<b>Hide Body</b>	<b>⌘B</b>
<b>Command Keys</b>	<b>⌘K</b>
.....	
<b>New</b>	<b>⌘N</b>
<b>Open...</b>	<b>⌘O</b>
<b>Save</b>	<b>⌘S</b>
<b>Save As...</b>	<b>⌘A</b>
.....	
<b>Page Setup...</b>	<b>⌘G</b>
<b>Print</b>	<b>⌘P</b>
.....	
<b>Quit</b>	<b>⌘Q</b>

**figure 12**

Help... opens the help window.

Hide Body leaves only the scrolling "tape" window visible on screen. Hide Body is replaced by Show Body. Show Body makes the calculator reappear.

Command Keys opens a window with a complete list of CALC2's ⌘-key substitutes plus a list of the four currently selected functions.

New opens a new CALC2 file.

Open... lets you open previously saved CALC2 files.

Save lets you save your work as a CALC2 file. When saving for the first time, it lets you name the file and specify where it should be saved.

Save As... lets you save your file under a different name or in a different location.

Page Setup... lets you specify how your work should be printed.

Print lets you print your work.

Quit shuts down CALC2. If you have unsaved changes, a dialog box will open to give you a chance to save your work. To quit immediately without opening this dialog, hold down the shift key as you select Quit. Be very sure you want to shift-Quit, because any unsaved changes will be lost!

### **The Edit Menu**

The Edit menu is illustrated in figure 13, below.

<b>Edit</b>	
<b>Cut</b>	⌘H
<b>Copy</b>	⌘C
<b>Paste</b>	⌘V
<b>Clear</b>	⌘R
-----	
<b>Select All</b>	⌘L
-----	
<b>Duplicate Total</b>	⌘D
<b>Money</b>	⌘M

**figure 13**

Cut removes highlighted text from the tape window and copies it to the clip board.

Copy copies highlighted text from the tape window to the clipboard.

Paste inserts text from the clipboard into the tape window.

Clear removes highlighted text from the tape window. It will not be copied to the clipboard: it is deleted.

Select All selects (highlights) everything in the tape window.

Duplicate Total enters the previous total as the first line in a new calculation.

Money rounds off all answers to two decimal places. Selecting Money again will return CALC2 to floating decimal answers.

## 11 EDITING

You can copy your work to the clipboard and paste it into any application that accepts text. We recommend that you use the Copy command because the Cut command will remove selected text and numerals from the Tape Window. If you cut or clear selections from the tape window, CALC2 won't take that into account, which can lead to nonsense answers.

Pasting **into** CALC2 is not recommended. CALC2 can't perform math operations on pasted text or numbers. You can paste in the 23rd Psalm, but you can't multiply it by two and get the 46th Psalm!

If you use Cut, Paste or Clear, press the clear or escape key before continuing. This will prevent future errors.

### FUNCTIONS SUMMARY

The following table explains the 11 mathematical functions built into CALC2.

**Note:** "Enter" means click a function button or type its command key equivalent (⌘-1 through ⌘-4).

<b>Menu Symbol</b>	<b>Function Button</b>	<b>Explanation</b>
<b>%</b>	xx%	CALC2 asks you to type the percentage you want. That percentage appears in the function button. Type a number, type an operand (+,-,*, or /), and enter your percentage. CALC2 will perform the percentage calculation.
<b>√</b>	square root	Type a number and enter square root. CALC2 calculates the square root of that number.
<b>x*x</b>	square	Type a number and enter square. CALC2 calculates the square of your number.
<b>K</b>	xxx	CALC2 asks you to enter a number. That number appears in the function button. Enter K whenever you want that number in your calculations.
<b>π</b>	3.1415926536	Pi calculated to 10 decimal places. Enter π whenever you need it.
<b>e^x</b>	e to x power	Type a number, enter e^x. CALC2 calculates e to the power of your number.
<b>logX</b>	natural log of X	Logarithm to the base e. Type a number, enter logX. CALC2 calculates the power of e equal to your number.
<b>sine</b>	sine	Type a number, enter sine. CALC2 calculates its sine, in degrees.
<b>cos</b>	cosine	Type a number, enter cos. CALC2 calculates its cosine, in degrees.
<b>arc</b>	arctangent	Type a number, enter arc. CALC2 calculates its arctangent, in degrees.
<b>rand</b>	pos. (or neg.) rand. no.	Random number generator. CALC2 asks you to select a range of random numbers. That range appears in the function button. Enter rand. CALC2 will generate a random number for you.

**Don't forget to press the equal (=) key when you are ready for the answer.  
You may also use the Return or Enter key instead of the equal key.**

### **SETTLING UP**

CALC2 is shareware. If you keep it more than 15 days, please mail \$20.00 US to:  
Nigel Gusdorf  
1505 Arcadia Avenue  
Austin, Texas 78757  
CompuServe 71214, 2324

**CompuServe** customers can register their copy of CALC2 on-line. GO SWREG takes you to CompuServe's Shareware Registration Database. CALC2's Registration ID is 756. See the accompanying CompuServe ReadMe file for details.

**Thank you for supporting shareware.**

### **VERSION HISTORY**

Version 1.0 released March 22, 1993.

Version 1.01 released August 7, 1993. Corrects display of file names in window title and changes behavior of Cancel dialog buttons and Save As... dialogs to match Apple interface guidelines.

CALC2 is copyright 1992, 1993 by Nigel Gusdorf.  
This manual ©1993 by Nigel Gusdorf.  
Macintosh and Apple are registered trademarks of Apple Computer, Inc.  
CompuServe is a registered trademark of CompuServe Inc.